

Gaffer

HONG KONG

Jules Lambe
Jules@gaffer.com.hk
www.gaffer.com.hk

Gaffer
info@gaffer.com.hk
www.gaffer.com.hk



+852 96782726



juleslambe



juleslambe



Jules.Lambe



GafferDesignArt



Jules Lambe



GafferDesignArt

Level 43 & 44, Champion Tower, 3 Garden Road, Central, Hong Kong

JULES LAMBE

Born Adelaide Australia Australia Citizen
Hong Kong permanent resident Bangkok office 2018
APEC Card

EDUCATION & EXPERIENCES

Photography, Design & Applied Arts - Adelaide Australia

Art History – Melbourne Australia

London Sothebys - 20th Century Design & Applied Arts

5 year apprentice of Pastry Regency Collage Adelaide

11 year Career Senior positions including executive Pastry Chef in 2-3 Chef Hat restaurants Melbourne

Executive Pastry Chef 2 Michelin Star Dublin

Gaffer DesignArt Ltd Business Registration in February 2002 as ownership Jules Lambe in Hong Kong

Gaffer DesignArt Ltd is a registered Hong Kong trading Ltd Company since 2002

Gaffer DesignArt Ltd – operation is 2 people

Languages – Native English



HOTELS (edited)

Shanghai Ji Ang 78 (ongoing) 2024

Alila Maldives 2022

Mandarin Oriental Savoy Zurich with Velvenoir 2024

Mandarin Oriental Hong Kong Styling Lobby, L23 2021

ANDAZ PROGAUE (with Velvenoir) 2022

Mandarin Oriental Vienna (concepts with Velvenoir) 2022

Renaissance Resort Nusa Dua 2021 completed

Nagasaki Japan Styling 2021

Hong Kong Residential Private 2021

Rosewood Hotel Bangkok

Rosewood Hotel Phnom Penh

Rosewood Hotel Phuket

Maldives Hardrock Hotel, Elephant & Butterfly

Citizen M Shanghai

HIX Lobby Seoul

Peninsula Hotel Beijing

Peninsula Hotel Paris, Lili Restaurant

Peninsula Hotel Shanghai, Sir Ellys Bar

Mandarin Oriental Hotel Guangzhou

Mandarin Oriental Hotel Macau

Fourpoints Zhengzhou China

Okura Macau, All Day Dinning

Marina Bay Sands Singapore

Galaxy Macau Hotel

Sands Macau, Court of Palms

Mezza 9 Macau

Four Seasons Hotel Hong Kong

Four Seasons Hotel Macau

Sheraton Macau

Ritz Carlton Beijing

Metropolitan Golden Hotel Tainjin China

Andaz Hotel Shanghai

Sheraton Xiamen

Shangri-La Beijing

Altira Hotel Macau

Mandarin Oriental Hotel Geneva

Peninsula Hotel Hong Kong

Mandarin Oriental Hotel Landmark Hong Kong

Shangri-La Hotel Shanghai

MGM Macau

Venetian Piazza Club Macau

Hyatt Regent Guiyang China

GAFFER

HONG KONG

Jules Lambe
Jules@gaffer.com.hk
www.gaffer.com.hk

Gaffer
info@gaffer.com.hk
www.gaffer.com.hk

Level 43 & 44, Champion Tower, 3 Garden Road, Central, Hong Kong

+852 96782726
juleslambe
juleslambe
Jules.Lambe

GafferDesignArt
Jules Lambe
GafferDesignArt

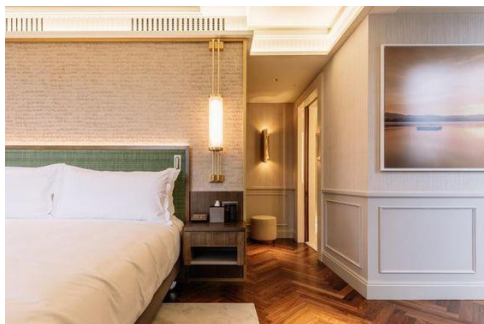


RESIDENTIAL, CLUBHOUSE, PRIVATE RESIDENCY

Henderson Land Minden Avenue Hong Kong
Henderson Land Tin Hua, Hong Kong
Grand Austin West Kowloon Hong Kong
Blue Pool, Mid levels Hong Kong
May Road, Hong Kong
St Johns Building Garden Road Hong Kong
Manhattan Heights, Hong Kong
Marina One 1th Singapore
Valais New Territories Hong Kong
Cathay Pacific Business Lounge Hong Kong
Phuket Private House (ongoing)
Ekkamai Bangkok
Kennedy Town, Hong Kong

SELECTION PROJECTS, ART FAIRS, MUSEUMS & ART BIENNALES (EDITED)

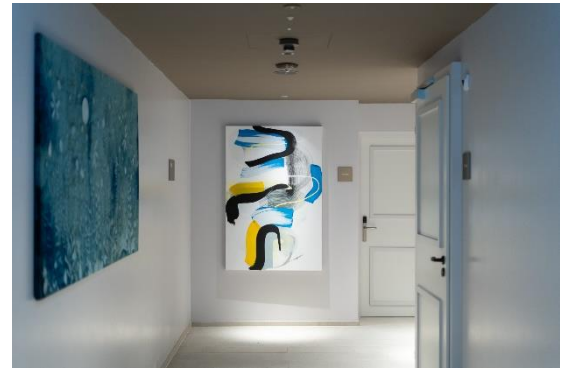
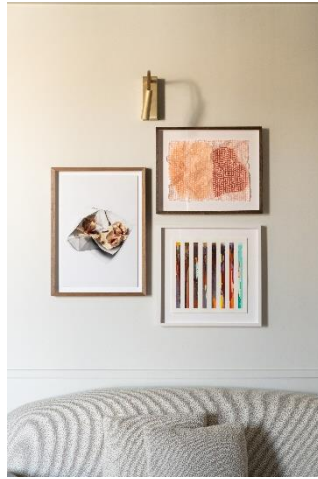
Venice Biennale 2013 Palazzo Bembo Chen Ping
Venice Biennale, 2015, Palazzo Mora Glen Clarke
Maison Objet Paris, 2016, Korakot
MOCA Museum Beijing, 2015 Youth Plus Jessi Wong
Copelouzos Family Art Museum, 35x35cm art projects – Terri Brooks, Chen Ping, Jessi Wong 2016
Copelouzos Family Art Museum, 35x35cm Chinese Art project,
Art Central Art Fair Hong Kong, 2019, RED GATE BEIJING
Art Central Art Fair, Hong Kong, 2018 RED GATE BEIJING
Art Central Art Fair, Hong Kong, 2017 RED GATE BEIJING
Art Central Hong Kong Hong Kong 2015, artist Jessi Wong
Arts House Singapore, 2006 Group show 40 sculptors
Arts House Singapore, 2007 Group Show 20 Artists/sculptors
Arts Singapore, Australian Pavilion, 2005 40 years Gerry King retrospective,
Tutsek Foundation, Munich Germany, 2008 China Glass today
Rotunda, Exchange Square Hong Kong Podium, Chinese Australia Artist Rotunda, Exchange Square, Podium Group Show
Rotunda, Exchange Square, Podium Group Show (Austrade assisted)
Art Singapore (2005)
Art Singapore (2006)
Art Singapore (2008)
Art Singapore (2009)
Fine Art & Asia Hong Kong (2012)
KIAF Seoul (2007)
ART PLATFORM Los Angeles (2012)
LA ART Show Los Angeles (2011)



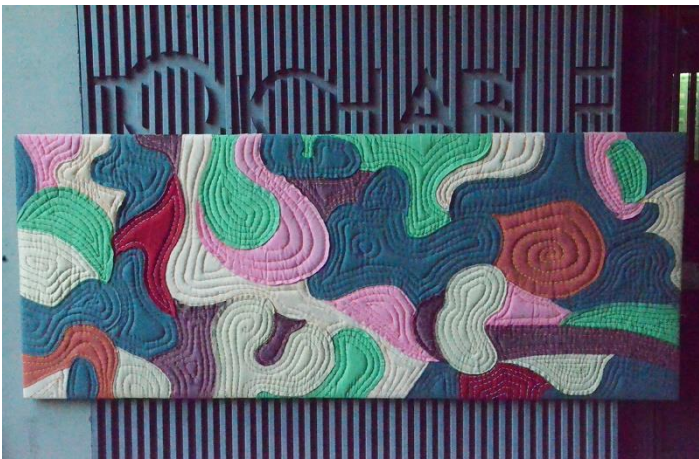


MANDARIN ORIENTAL
SAVOY
ZURICH

VELVENOIR



Alila Maldives



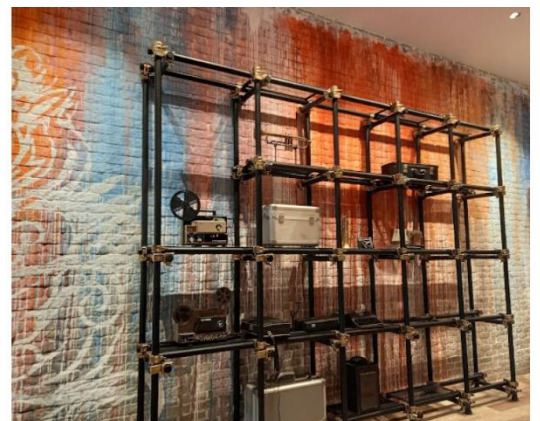
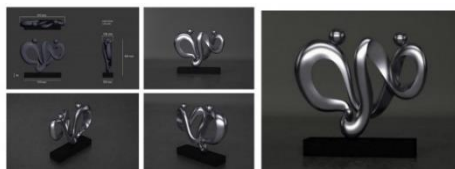
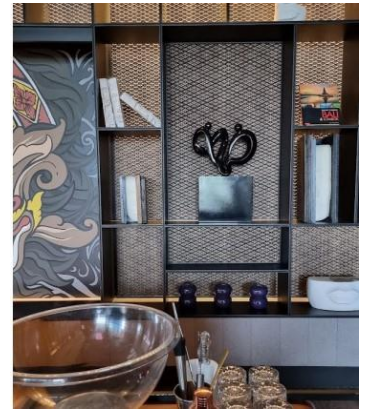


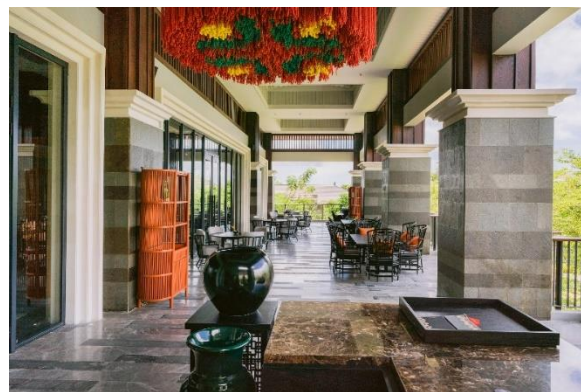
Hong Kong Styling & Objects L23, Lobby

MANDARIN ORIENTAL
THE HOTEL GROUP



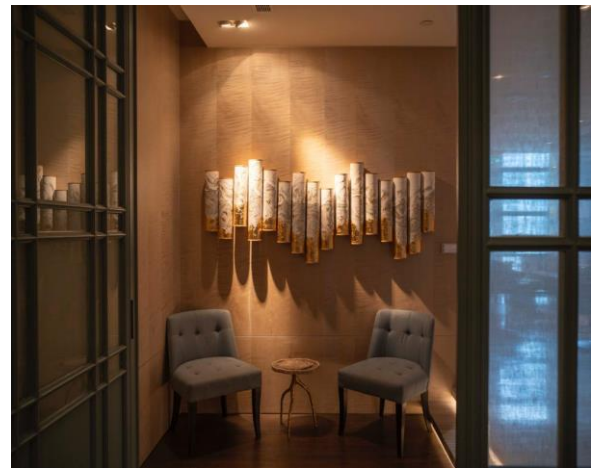
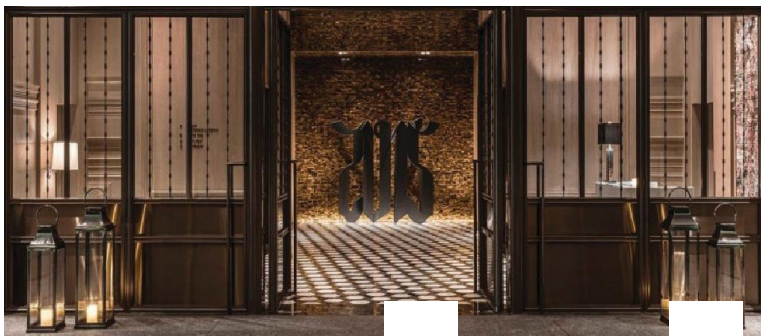
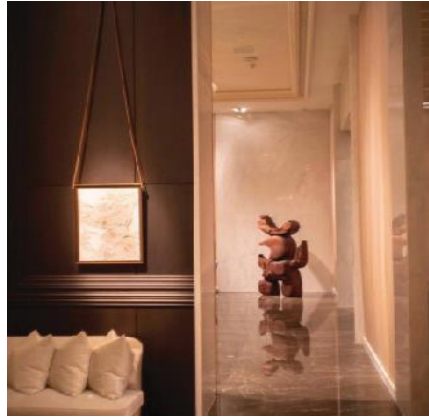
Nusa Dua Bali

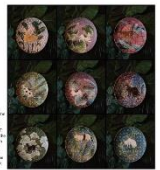




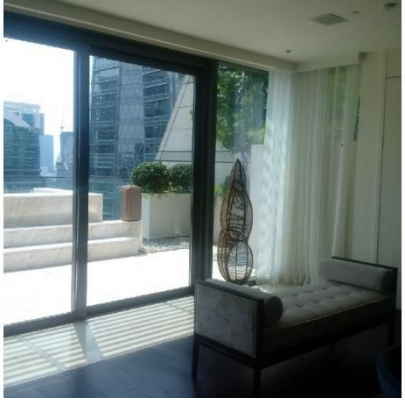
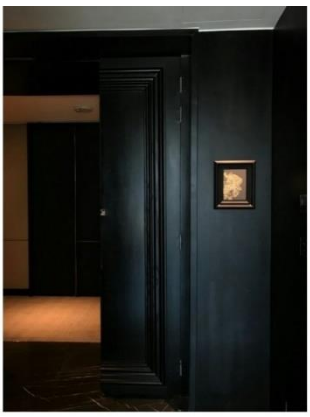
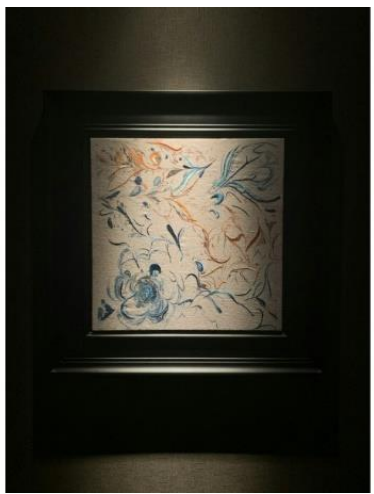
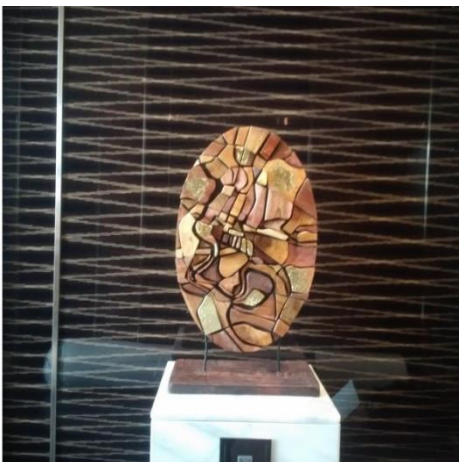
NAGASAKI JAPAN STYLING 2021 with Absolute Lifestyle Hong Kong





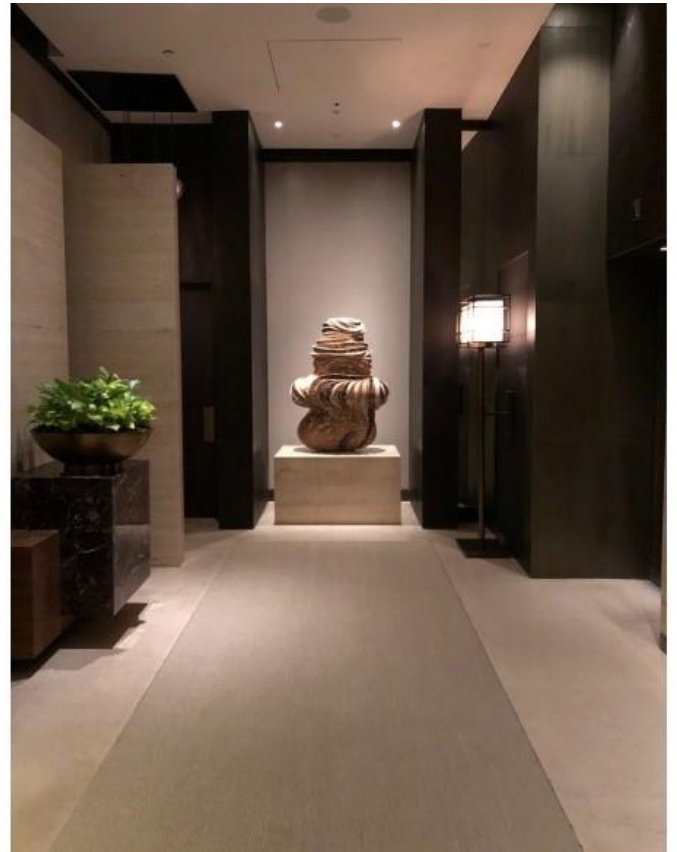
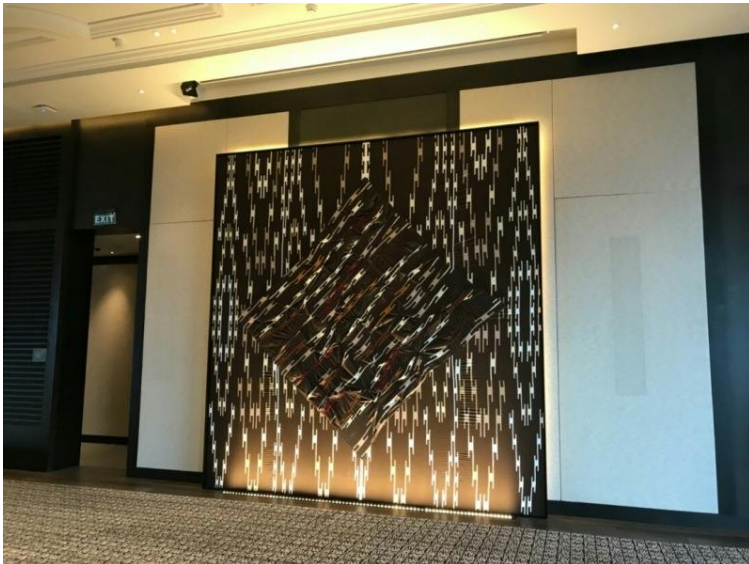


SIAMESE PLATTER
 DESIGNER: SUKUMVIT SUKUMVIT
 MATERIAL: BRASS
 SIZE: 15 CM
 COLOR: GOLD, BRASS, BROWN
 YEAR: 2018



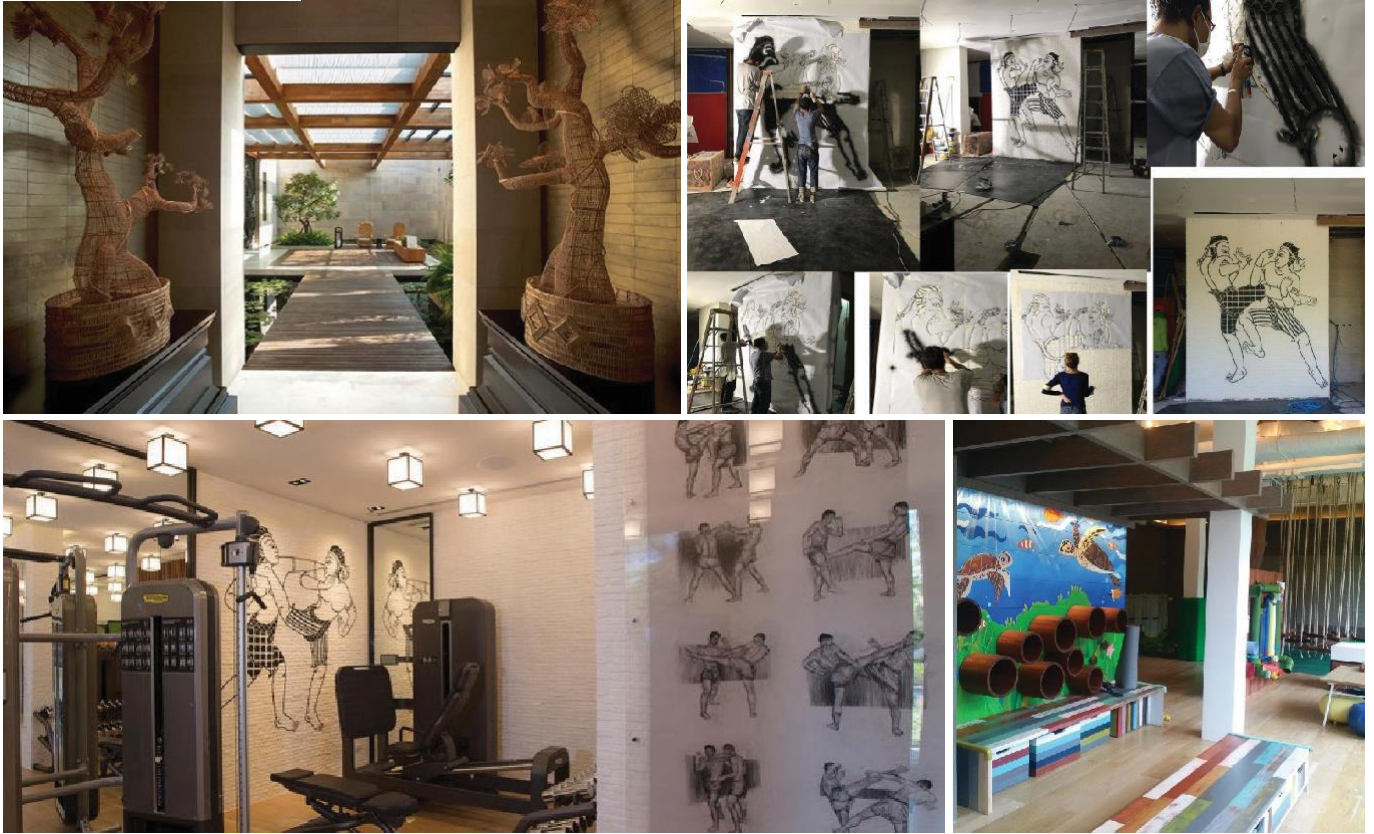
ROSEWOOD Phnom Penh

A SENSE of PLACE™

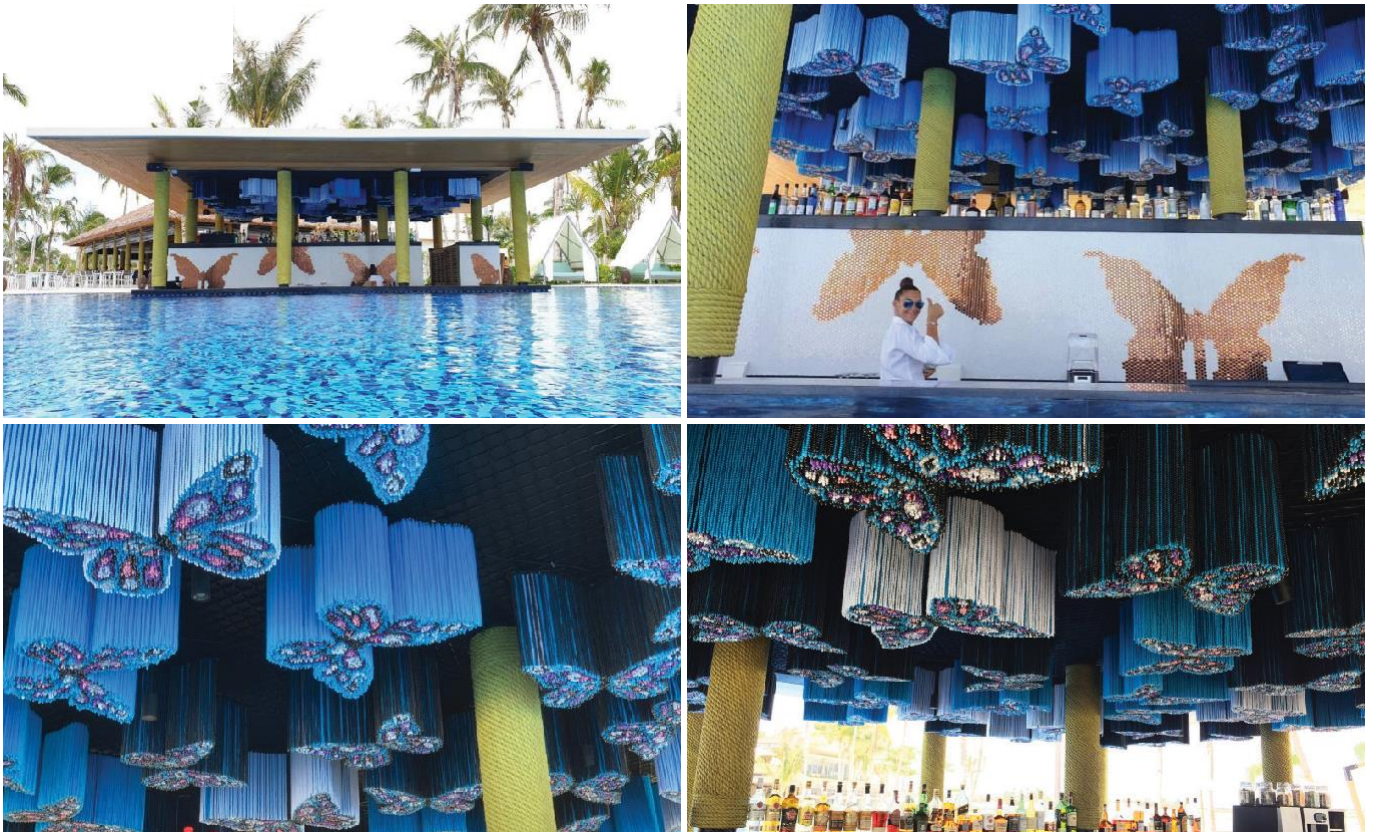


ROSEWOOD PHUKET

A SENSE of PLACE™

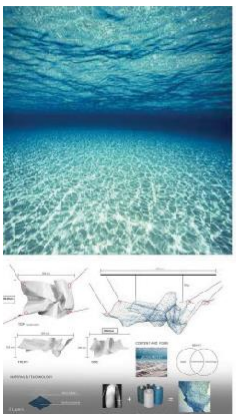
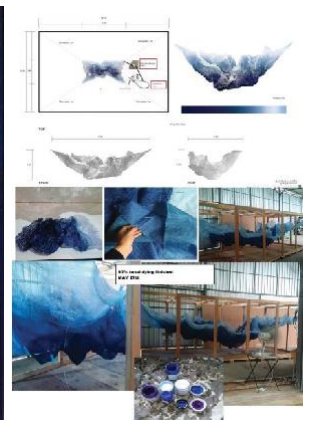


ELEPHANT & BUTTERFLY





SEOUL



KRAM
Drama, Drama, Drama

The new technology for sky by its essence like surface but also essential, it is its clarity and softness. These undulating qualities are often referred to as textures and acts as a form of comparison with line and knowledge, atmosphere. This fabric sculpture elements like also use a clear blue color, in order to, to support with architecture through their own light to play.



BEIJING



sketch
best traditional Beijing culture of tea drinking



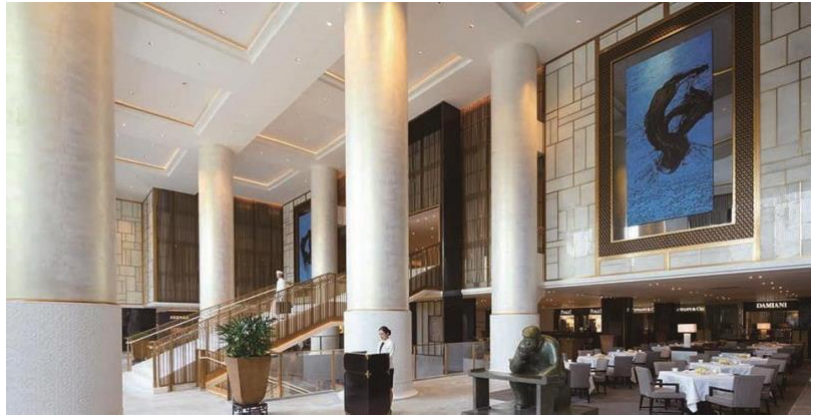
miniature clay model



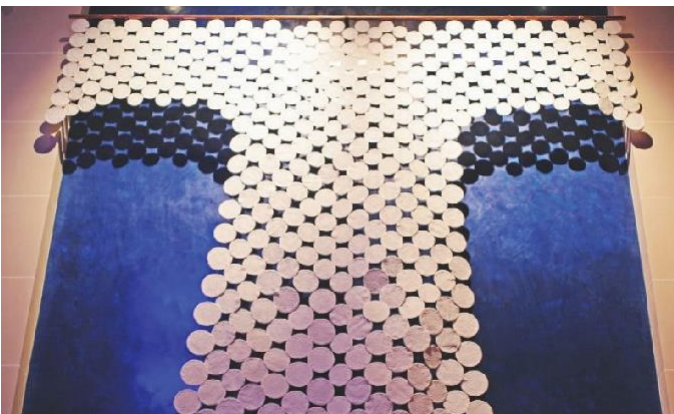
full scale clay for casting



Installation Beijing Peninsula



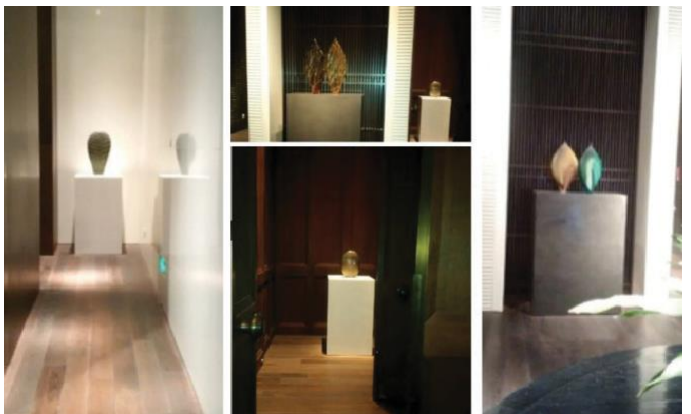
PARIS, LILI RESTAURANT



SHANGHAI, SIR ELLYS BAR



GUANGZHOU





MANDARIN ORIENTAL
THE HOTEL GROUP

MACAU



FOUR
POINTS
BY SHERATON

ZhengZhou



MACAU, ALL DAY DINNING



MARINA BAY Sands® SINGAPORE



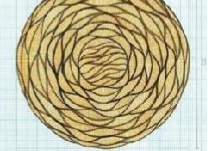
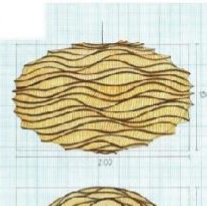
MARINA BAY *Sands*[®]
SINGAPORE





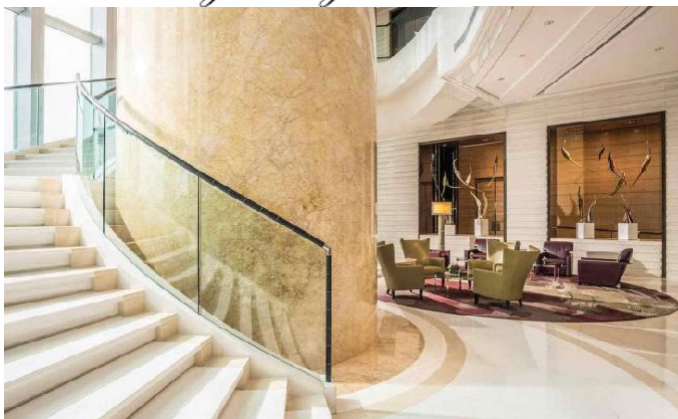
KORAKOT

Shenzhen Sands Court of Palms
Museum





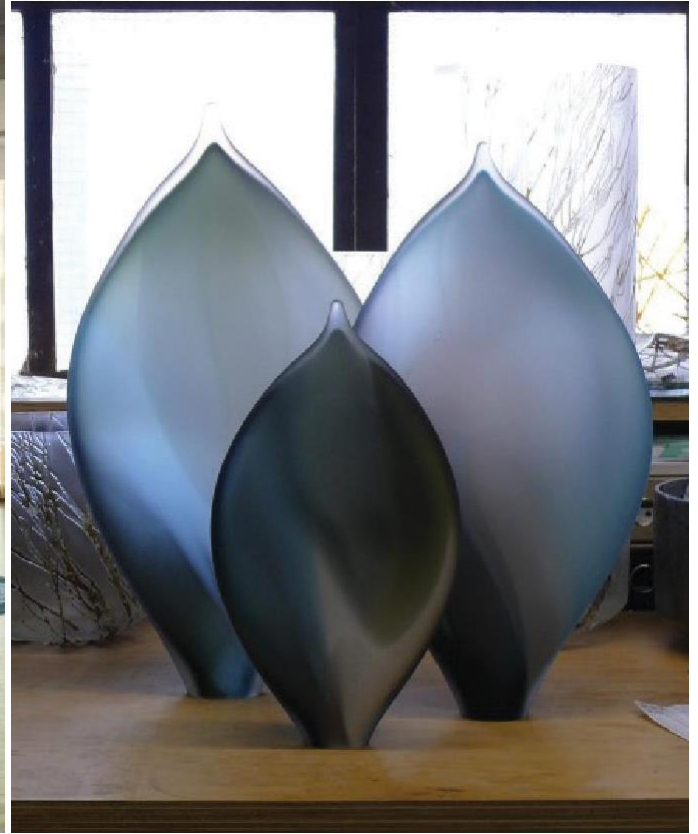
FOUR SEASONS HOTEL
Hong Kong





FOUR SEASONS HOTEL
Macao, Cotai Strip

MACAU



HYATT
REGENCY®

GUIYANG CHINA



HENDERSON LAND MINDEN AVE, HONG KONG CLUB HOUSE



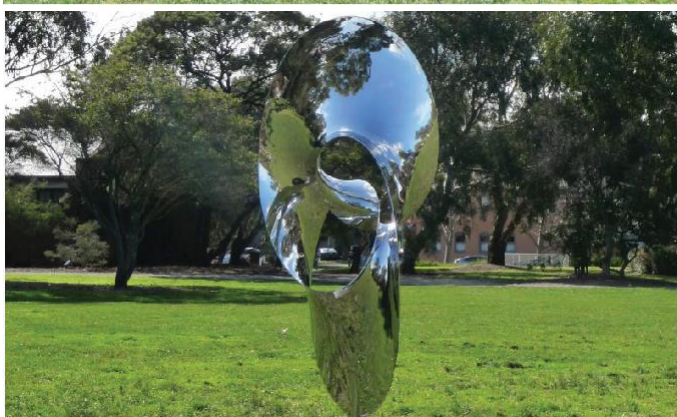
HENDERSON LAND TIN HUA, HONG KONG



GRAND AUSTIN WEST KOWLOON CLUB HOUSE



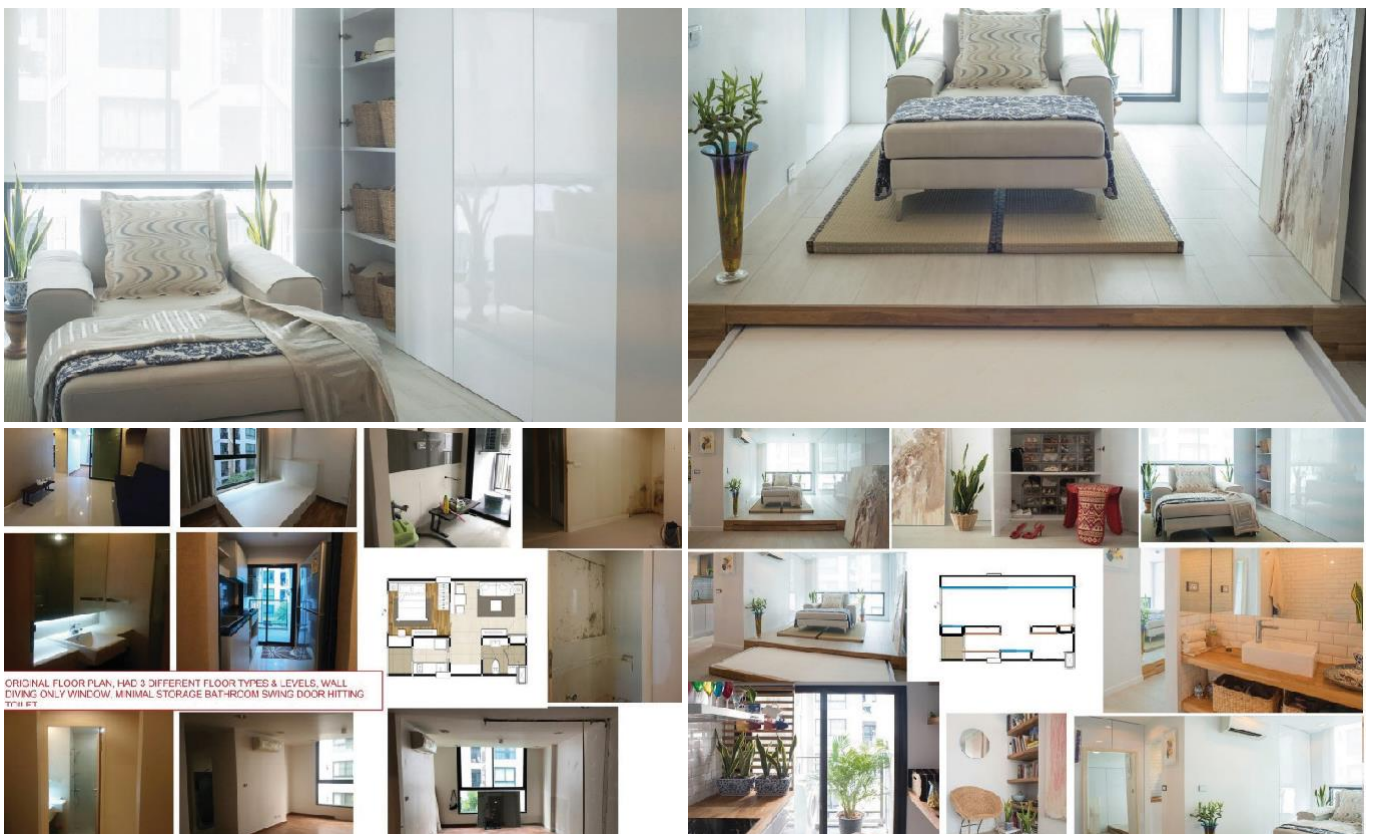
MAY ROAD, MID LEVELS CLUB HOUSE



BLUE POOL ROAD & KOWLOON TONG CLUB HOUSE



EKKAMAI, PRIVATE SMALL CONDO RENOVATION

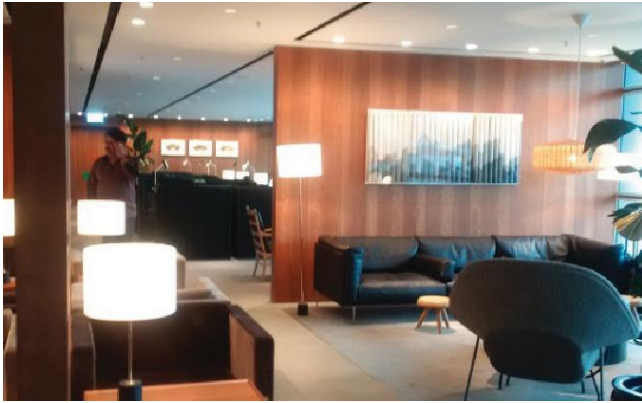


KENNEDY TOWN, PRIVATE CONDO RENOVATION & PUBLICATION



ST JOHNS BUILDING HONG KONG





Red Earth L II
Wood Block Print, Ink on Rice paper & acrylic framed
H71 x L71 x D7 cm (each)

Detail



Valais Club House Hong Kong





Taipei

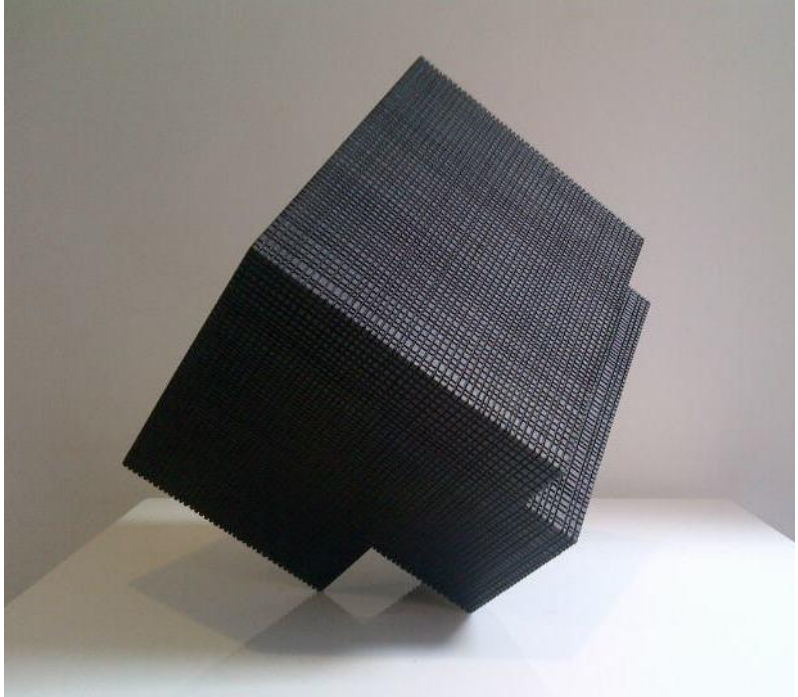
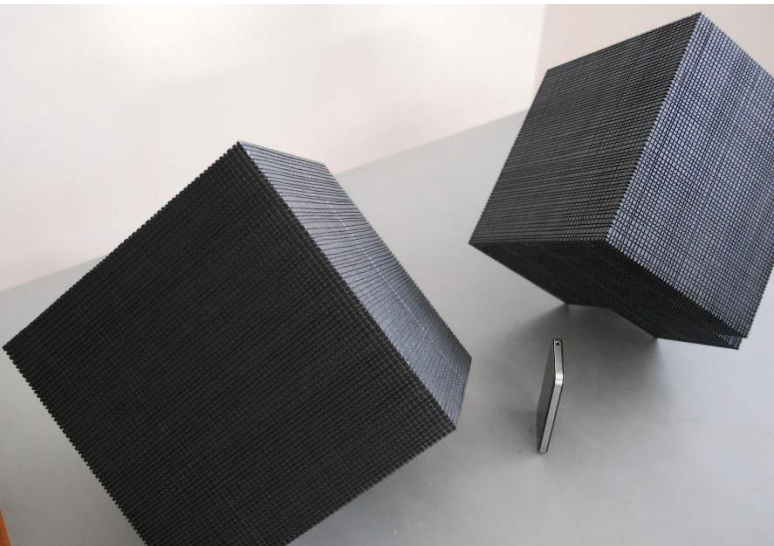
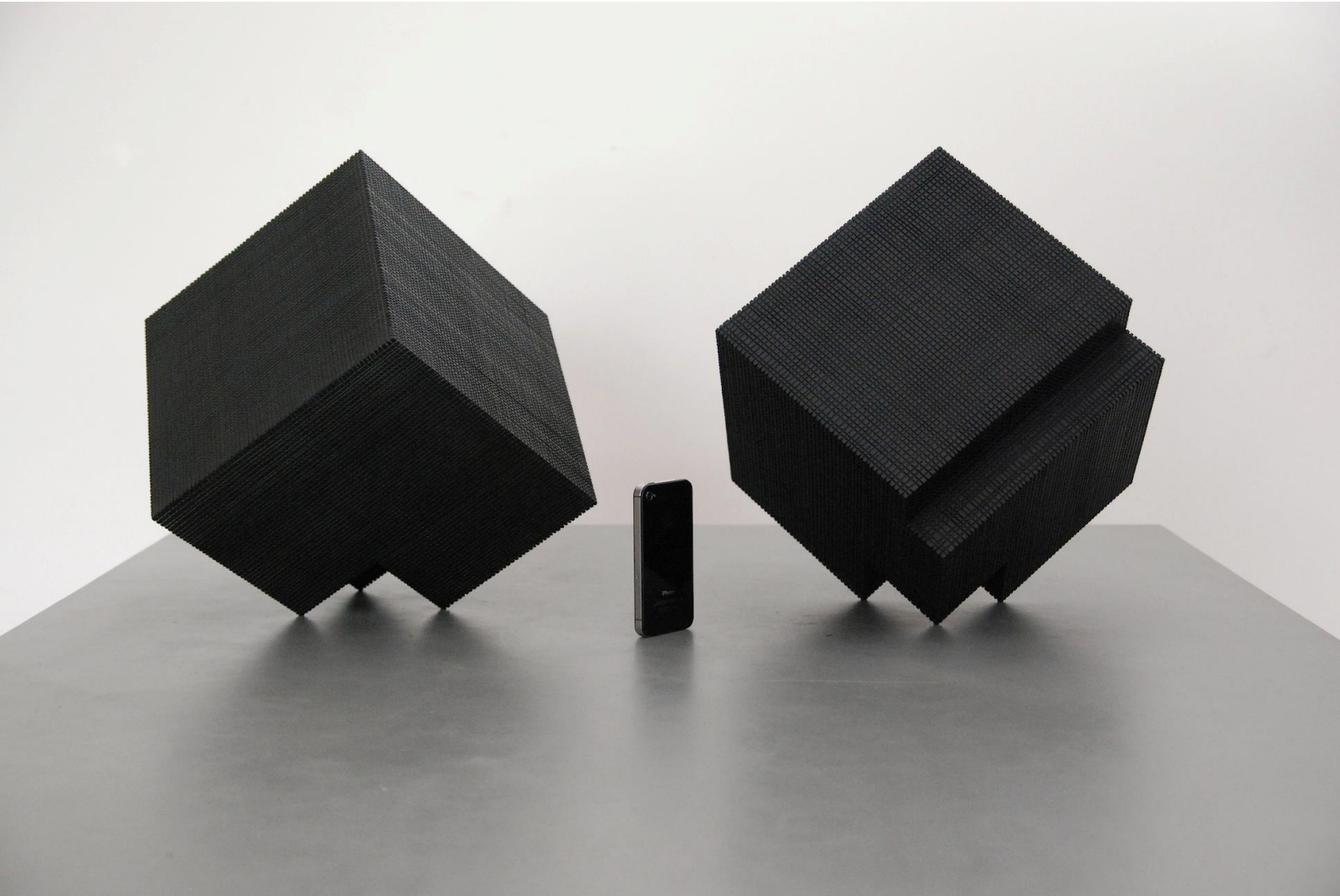
MANDARIN ORIENTAL
THE HOTEL GROUP



Private Residential House, Stone Sculptures



Hong Kong Residential Project



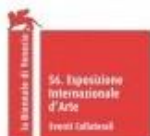
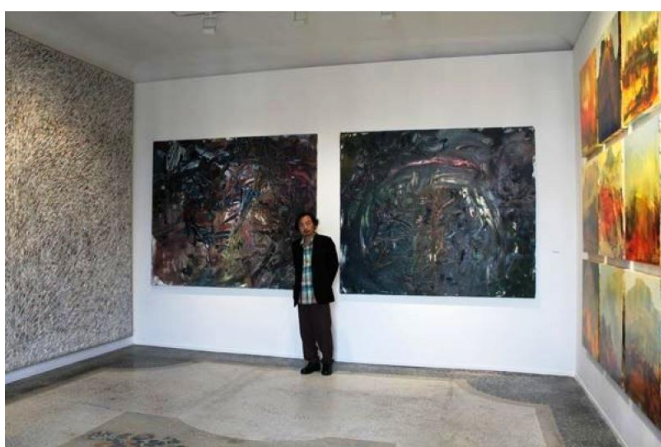
Venice Biennale Curator Projects 2013, 2015 Chen Ping & Glen Clarke



UPCOMING



Gaffer Ltd & Glen Clarke selection within 56th Venice Biennale - www.personalstructures.org
 a Group exhibition of International acclaimed Artists representing the concept of Culture - Mind - Becoming
 @ www.palazzomora.org
 Opens May 9th - November 22nd 2015.



THE CURATORS VALERIA BOMAZZINI, SARAH GOLD, RACHEL DE STEFANO, LUCIA PEDRANA, CARLO RICCI, KARLUS DE JONGH, RENE BRETHERYER AND ANTONY BIRD ARE PLEASED TO INVITE YOU TO:

PERSONAL STRUCTURES Crossing Borders

Preview Events

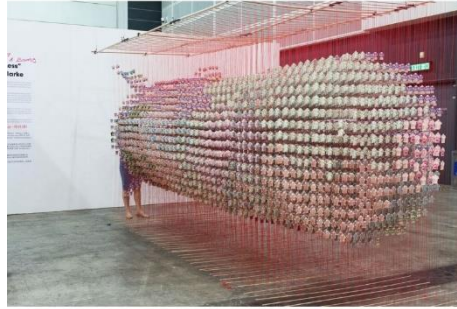
May 7 & 8, 2015
 18:00 - 22:00
 Palazzo Mora & Palazzo Bembo
 Venice, Italy



Participating artists are: Marc Abele - Hans Achinger - Gus Abon - Carl Andre - Nadine Anakeiyen - Orly Arik - Bruce Barber - Lore Bett - Signit & Bergström - Simon Blodjeau - Marjole Blank - Hanna Boks - Eric Bourrier - Daniel Buren - Stefano Cerrito - Roberto Caraglio - Sojin Cha - Manohar Chhaveria - Paul Chung Bor - Riema Chow - Uem - Celine - Michael Cook - Karim De Jongh - Herman De Vries - Iris Dierckx - Carole Feuerman - Antonio Ferris - Katrin Filippis - Marc Fromm - Andrea Gal - Daniele Galliano - Roxanna Galizi - Beatriz Gershtein - Valerio Ghislanzani - Andrea Guadagnino - Kimberley Gundie - Ho Han - Mau Harrison - Ariel Hassan & Felix Larraga - Renia Hausner - Anne Hegdahl - Nam Hong - Dieter Hülzer - Walter Hugo & Zorini - Lucretia Hultberg - Heon Kiwan - Pop Liandras - Manfred Kosterer - Sonja Kroll - Joseph Kosuth - Jaroslaw Koszowski - Beol Quarr - Guillaume Lachapelle - Sam Leach - Myungji Lee - Zikada Ljubicic - Norma Lopez - Michael Lutter - Stef Lutz - Manfred Design - Louise Marson - Uma Meevke - Franca Marefat - Jahnagar Munirathang - Lee Nam Lee - Li-Ping - Jerko Wilam - Houzia Huel - Hermann Nitsch - Yoko Ono - Phoebe Paradise - Ki Young Park - Mike Parr - Wolfgang Pfele - Daniel Perle - Tony Price - Qin Dong - Saad Qureshi - Martina Rieker - Jörg Riepe - Heo Reiver - Rene Rietmeyer - Veronique Richard - Anissa Roeschstein - Nicolas V. Sanchez - Daniel Schär - Sebastian Schröder - Greg Serru - Amber Sena - Jonathan Shimony - Justin Davis Slonim - Karl Sönnig - Martin Stommel - Miral Topkcu - Josephine Turbida - Günther Uecker - Guy Van Den Bulcke - Marcello Vega - Vitale & Glenn Westley - Wayne Warren & Jayne Dyer - Lawrence Weiner - Doris Whemeyer - Arnie Winzler - Zhang Ju - Zhang Chunlan



MOCA Museum Beijing. Copelouzos Athens, Venice Biennale 2013, 21



MOCA Museum Beijing

